

# Ludwig van Beethoven (1770-1827)

## Symphonie No.5 in c-moll

### I.Satz

*Allegro*

Analysepunkt 02

Takt 253

Flöte

Oboe

Klarinette in B

Fagott

I.Violenen

II.Violenen

Violen

Celli  
Kontrabässe

The image displays a musical score for the first movement of Beethoven's Symphony No. 5 in C minor, starting at measure 253. The score is divided into two analysis points: 'Analysepunkt 01' (measures 253-256) and 'Analysepunkt 02' (measures 257-260). The instruments shown are Flöte, Oboe, Klarinette in B, Fagott, I.Violenen, II.Violenen, Violen, and Celli/Kontrabässe. Dynamics include p (piano) and pizz. (pizzicato). The Flöte part is mostly silent. The Oboe, Klarinette in B, and Fagott parts feature sustained notes with dynamics. The Violin and Viola parts have rhythmic patterns, with the Viola and Cello/Double Bass parts playing pizzicato. The woodwinds (Oboe, Clarinet, Bassoon) have sustained notes with dynamics. The Flute part is mostly silent.

# Ludwig van Beethoven (1770-1827)

## Symphonie No.5 in c-moll

### I.Satz

Analysepunkt 02

Takt 258

Flöte

Oboe

Klarinette in B

Fagott

*a2*

*p*

Detailed description: This block shows the first four staves of the musical score for measures 258-261. The Flöte staff has a whole rest in measures 258 and 259, followed by a half note G4 in measure 260 and a half note A4 in measure 261, both marked with a red *a2* and a green *p*. The Oboe staff has a whole note G4 in measure 258, a whole note A4 in measure 259, and a whole note G4 in measure 260, with a slur over the first three measures. The Klarinette in B staff has a whole note G4 in measure 258, a whole rest in measure 259, and a whole note G4 in measure 260. The Fagott staff has a whole note G4 in measure 258, a whole note A4 in measure 259, and a whole note G4 in measure 260, with a red slur over the last two measures.

I. Violinen

II. Violinen

Violen

Celli  
Kontrabässe

Detailed description: This block shows the last four staves of the musical score for measures 258-261. The I. Violinen staff has a quarter note G4 in measure 258, a quarter note A4 in measure 259, and a quarter note G4 in measure 260, with a slur over the last two measures. The II. Violinen staff has a whole note G4 in measure 258, a whole note A4 in measure 259, and a whole note G4 in measure 260, with a slur over the first two measures. The Violen staff has a whole note G4 in measure 258, a whole rest in measure 259, and a whole note G4 in measure 260. The Celli/Kontrabässe staff has a whole note G4 in measure 258, a whole rest in measure 259, and a whole note G4 in measure 260.

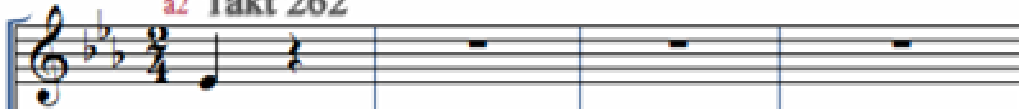
# Ludwig van Beethoven (1770-1827)

## Symphonie No.5 in c-moll

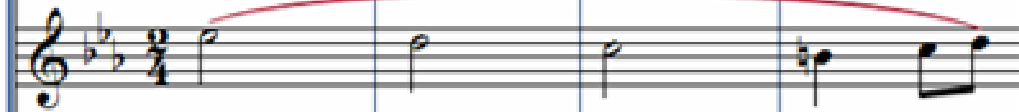
### I.Satz

a2 Takt 262

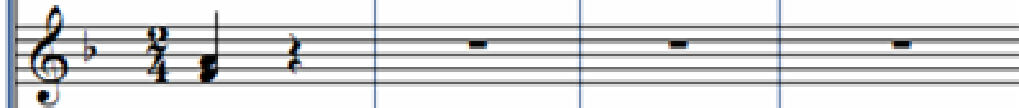
Flöte



Oboe



Klarinette in B



Fagott



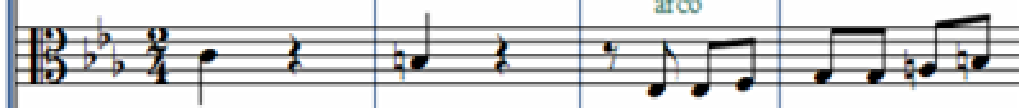
I.Violenen



II.Violenen



Violen



Celli  
Kontrabässe



# Ludwig van Beethoven (1770-1827)

## Symphonie No.5 in c-moll

### I.Satz

#### Analysepunkt 03

Takt 266

Flöte

Oboe

Klarinette in B

Fagott

Trompete in C

I.Violenen

II.Violenen

Violen

Celli  
Kontrabässe

Musical score for woodwinds (Flöte, Oboe, Klarinette in B, Fagott) from Takt 266 of Beethoven's Symphony No. 5. The score shows dynamics like 'cresc.' and 'f'. A pink box highlights the woodwind section.

#### Analysepunkt 04

Musical score for brass and strings (Trompete in C, I.Violenen, II.Violenen) from Takt 266 of Beethoven's Symphony No. 5. The score shows dynamics like 'p' and 'ff'. A pink box highlights the brass and string sections.

Musical score for strings (Violen, Cello, Kontrabaß) from Takt 266 of Beethoven's Symphony No. 5. The score shows dynamics like 'cresc.' and 'ff'. A pink box highlights the string section.