

# Joseph Haydn

## Symphonie No.104 in D-Dur

### II.Satz

*Andante*

Takt 1

1+2 Fg.

ANALYSEPUNKT 01

Violine I

Violine II

Viola

Cello

Bass

==

Takt 5

Fg.

VI. 1

VI. 2

Vla.

Vc.

Kb.

The image shows a musical score for the second movement of Joseph Haydn's Symphony No. 104 in D major. The tempo is marked 'Andante'. The score is divided into two systems. The first system covers measures 1 to 4, with a pink box highlighting measures 1-4 and the label 'ANALYSEPUNKT 01'. The second system covers measures 5 to 8. The instruments listed are 1+2 Fg. (Flutes), Violine I, Violine II, Viola, Cello, Bass, Fg. (Trumpets), VI. 1, VI. 2 (Violins), Vla. (Viola), Vc. (Violoncello), and Kb. (Kontrabaß). Dynamics such as *p* (piano) and *fz* (forzando) are indicated. Red arcs above the notes indicate phrasing. Blue vertical lines mark the beginning of measures 1, 5, and 9. A double bar line is present at the end of measure 8.

# Joseph Haydn

## Symphonie No.104 in D-Dur

### II.Satz

#### Takt 9

1+2 Fg.

Violine I

Violine II

Viola

Cello

Bass

*fz*

#### Takt 13

Fg.

Vl. 1

Vl. 2

Vla.

Vc.

Kb.

ANALYSEPUNKT 02

# Joseph Haydn

## Symphonie No.104 in D-Dur

### II.Satz

**Takt 17** *1. Solo*

1+2 Fg. *p* ANALYSEPUNKT 03 *fz* *p*

Violine I *fz* *p*

Violine II *fz* *p*

Viola *fz* *p*

Cello *fz* *p*

Bass *fz* *p*

**Takt 21**

Fg.

VI. 1

VI. 2

Vla.

Vc.

Kb.

The image shows a page of a musical score for Joseph Haydn's Symphony No. 104, II. Satz. The score is for measures 17 to 21. The key signature is D major (two sharps) and the time signature is 2/4. The score is for a full orchestra, including strings and woodwinds. The first five staves (1+2 Fg., Violine I, Violine II, Viola, Cello, Bass) are grouped together and have a pink border. The last five staves (Fg., VI. 1, VI. 2, Vla., Vc., Kb.) are grouped together and have a blue border. The score includes dynamic markings (p, fz) and analysis annotations (ANALYSEPUNKT 03, red arcs, blue vertical lines). The first five staves have a pink border, and the last five staves have a blue border. The score is for measures 17 to 21. The first five staves (1+2 Fg., Violine I, Violine II, Viola, Cello, Bass) are grouped together and have a pink border. The last five staves (Fg., VI. 1, VI. 2, Vla., Vc., Kb.) are grouped together and have a blue border. The score includes dynamic markings (p, fz) and analysis annotations (ANALYSEPUNKT 03, red arcs, blue vertical lines).



# Joseph Haydn

## Symphonie No.104 in D-Dur

### II.Satz

Takt 32

1+2 Fg.



*p*

Violine I



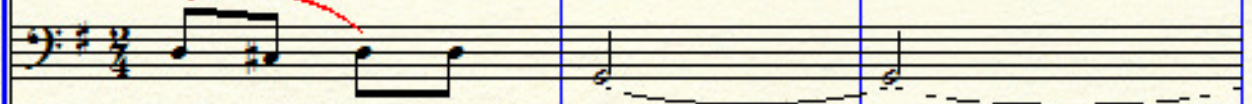
Violine II



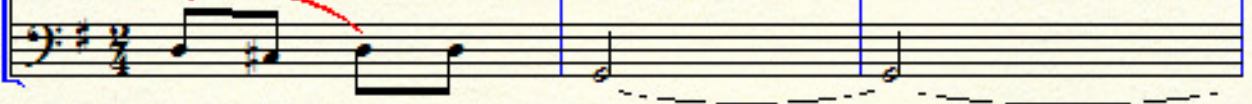
Viola



Cello

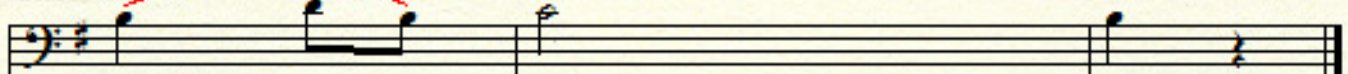


Bass



Takt 35

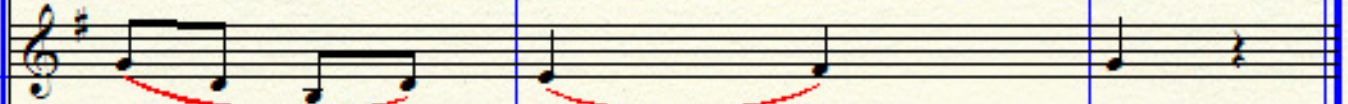
Fg.



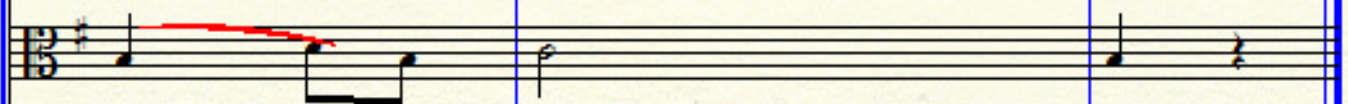
VI. 1



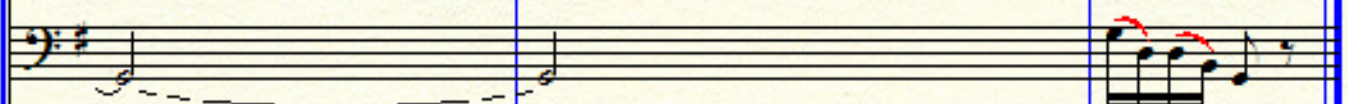
VI. 2



Vla.



Vc.



Kb.

